

# AQUABLATION<sup>®</sup>

Therapy by PROCEPT BioRobotics



## Aquablation<sup>®</sup> Therapy Product Portfolio

## ROBOTIC SYSTEM



### AQUABEAM Robotic System

The AQUABEAM Robotic System is the first FDA-cleared and CE Marked ultrasound-guided surgical robot utilizing automated tissue resection for the treatment of LUTS due to benign prostatic hyperplasia (BPH)

- Real-time, multi-dimensional imaging that uniquely combines an integrated cystoscope with intraoperative ultrasound
- Automated robotic execution for procedural predictability
- Proprietary heat-free waterjet for precise tissue ablation with lower rates of irreversible complications<sup>1</sup>



### AQUABEAM Handpiece

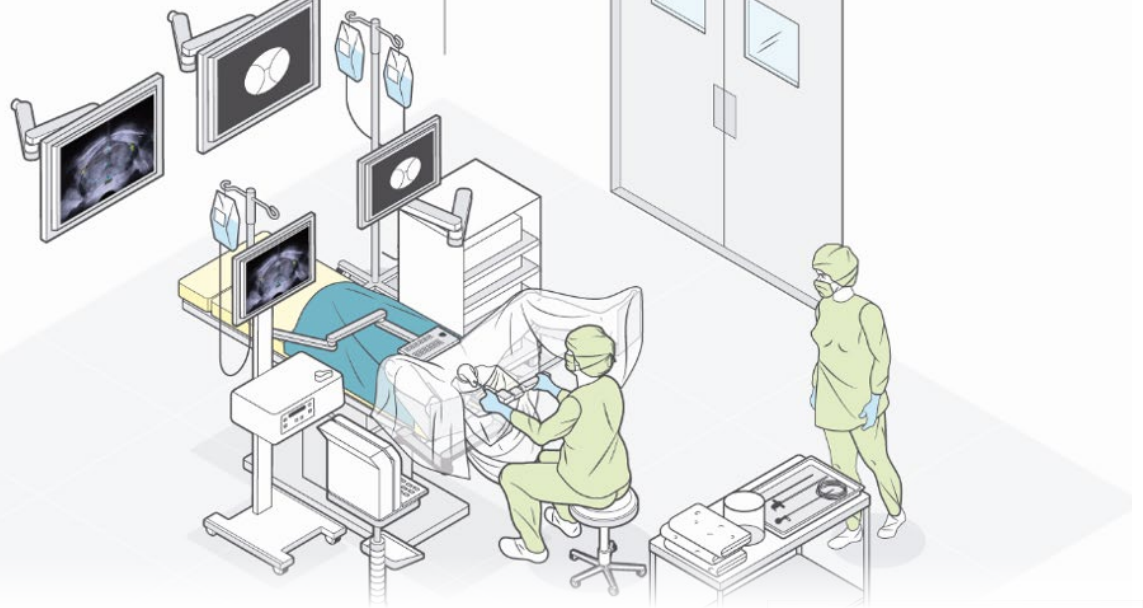
- Sterile disposable handpiece seamlessly integrates AQUABEAM Scope
- 24Fr stainless steel design with irrigation inflow facilitates ease of introduction
- Integrated aspiration capability for continuous fluid regulation

### AQUABEAM Scope<sup>2</sup>

- Custom, semi-flexible reusable fiber optic scope, with no lumens, ports, or open channels
- Compatible with various cystoscopic imaging systems

### References

1. Gilling P. et al. Three-year outcomes after Aquablation® therapy compared to TURP: results from a blinded randomized trial. *Can J Urol.* 2020 Feb;27(1):10072-10072.
2. Sterilization trays for scope reprocessing available in select geographies.



## ULTRASOUND

### SIUI® Apogee 2300 Ultrasound System<sup>3</sup>

- Seamless image integration with the AQUABEAM Robotic System
- Customized software and image presets for Aquablation therapy
- High-resolution imaging enables clear visibility of treatment area and key anatomical landmarks

### SIUI ECBP-1 Transrectal Bi-Plane Probe<sup>3,4</sup>

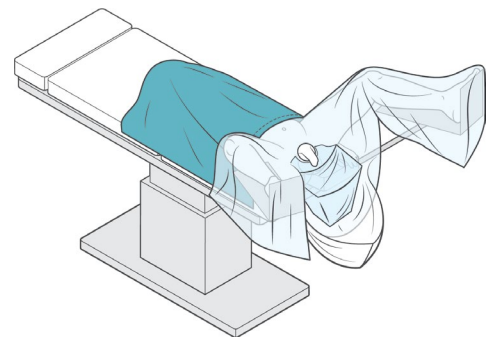
- Side-fire TRUS probe optimized for Aquablation therapy
- Unique array design provides a complete view of target anatomy



## ACCESSORIES

### PROCEPT Lithotomy Drape

- Customized, sterile, single-use drape designed specifically for Aquablation therapy
- Optimized fluid management solution compatible with various waste management systems
- All-in-one design facilitates ease of use



3. Available in select geographies.

4. Sealing test kit accessory enables seal testing prior to reprocessing and may be optional (refer to ECBP-1 Operation Manual).

OR layout is for reference purposes only, and is not an exact depiction. Final room setup may vary.

## SERVICE



The comprehensive AQUACARE™ Service Plan<sup>5</sup> provides extensive all-in-one coverage for the AQUABEAM Robotic System, Apogee 2300 Ultrasound System<sup>6</sup>, and ECBP-1 TRUS probe<sup>6,7</sup>.

5. Offerings may vary by geography
6. If selected to be included with the AQUABEAM Robotic System. Subject to regulatory clearances.
7. For a full description of service plan terms and conditions and exclusions, please contact PROCEPT Customer Service at [CustomerService@procept-biorobotics.com](mailto:CustomerService@procept-biorobotics.com).

### PART NUMBERS

<b>AB2000</b>	AQUABEAM® Robotic System <sup>†</sup>
<b>HP2000</b>	AQUABEAM Handpiece
<b>SC2000</b>	AQUABEAM Scope
<b>Apogee 2300</b>	SIUI Apogee 2300 Ultrasound System <sup>††</sup>
<b>ECBP-1 Probe</b>	SIUI Bi-Plane Probe
<b>Sealing Test Kit</b>	SIUI ECBP-1 Sealing Test Kit <sup>†††</sup>
<b>351101</b>	Lithotomy Drape
<b>JJ13837</b>	Sterilization Tray <sup>††</sup>
<b>JJ99402</b>	Sterilization Tray Holder <sup>††</sup>

<sup>†</sup> Accompanied by AQUABEAM Scopes, Apogee 2300 Ultrasound System, ECBP-1 TRUS Probe, and may include Sterilization Trays and Sterilization Tray Holders. For region specific system configurations consult local representative.

<sup>††</sup> Available in select geographies.

<sup>†††</sup> Sealing test kit accessory enables seal testing prior to reprocessing and may be optional (refer to ECBP-1 Operation Manual).

### RISK AND SAFETY INFORMATION

All surgical treatments have inherent and associated side effects. The most common side effects are mild and transient and may include mild pain or difficulty when urinating, discomfort in the pelvis, blood in the urine, inability to empty the bladder or a frequent and/or urgent need to urinate, and bladder or urinary tract infection. Other risks include ejaculatory dysfunction and a low risk of injury to the urethra or rectum where the devices gain access to the body for treatment. For more information about potential side effects and risks associated with Aquablation therapy, speak with your urologist or surgeon. No claim is made that the AQUABEAM® Robotic System will cure any medical condition, or entirely eliminate the diseased entity. Repeated treatment or alternative therapies may sometimes be required.

#### AQUABEAM® Robotic System Indications for Use: United States, Canada and Hong Kong

The AQUABEAM® Robotic System is intended for the resection and removal of prostate tissue in males suffering from lower urinary tract symptoms due to benign prostatic hyperplasia.

#### AQUABEAM® Robotic System Indications for Use: Rest of World

The AQUABEAM® Robotic System is intended for the resection and removal of prostate tissue in males suffering from lower urinary tract symptoms.

#### PROCEPT Lithotomy Drape Indications for Use

The Lithotomy Drape is intended to serve as a protective patient covering in urological procedures.

#### SIUI Apogee 2300 Indications for Use

The SIUI Apogee 2300 system is intended for diagnostic ultrasonic imaging for abdominal, pediatric, small organ, musculoskeletal, cardiac, peripheral vascular, trans-vaginal and trans-rectal applications.

PROCEPT BioRobotics: 900 Island Drive, Ste 201, Redwood Shores, CA 94065, United States. [www.PROCEPT-BioRobotics.com](http://www.PROCEPT-BioRobotics.com)

© 2020 PROCEPT BioRobotics Corporation. All rights reserved.

AQUABLATION, AQUABEAM, PROCEPT BIOROBOTICS, and the PROCEPT BIOROBOTICS logo are registered trademarks of PROCEPT BioRobotics Corporation. The Apogee 2300 and ECBP-1 Bi-Plane Probe are manufactured by Shantou Institute of Ultrasonic Instruments Co. Ltd. and distributed by PROCEPT BioRobotics Corporation. SIUI is a registered trademark of Shantou Institute of Ultrasonic Instruments Co. Ltd. in the United States and other countries and used by PROCEPT BioRobotics Corporation with permission. MLO364.A

**PROCEPT**  
BIROBOTICS